

FUTURE SHOCK! LAMU COUNTY – A SCENARIO GAME

WWF and Natural Capital Project, ACES Workshop

December 8, 2014

Amy Rosenthal

Nasser Olwero

Nirmal Bhagabati

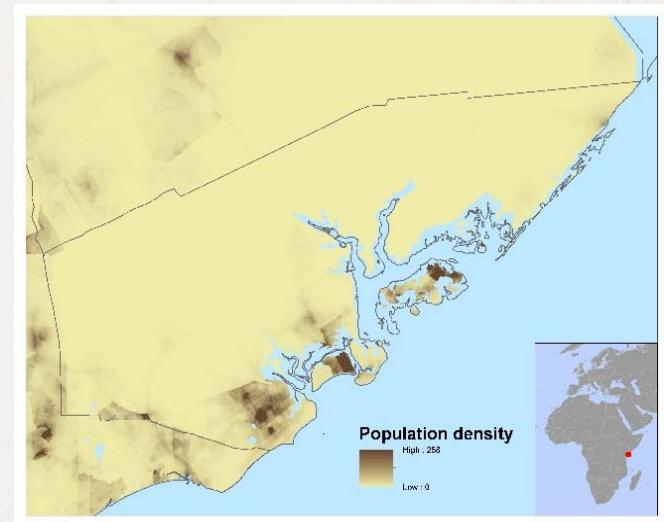
Adam Dixon

Emily McKenzie

Gregory Verutes

LAMU TODAY

- Communities nestled among beautiful mangroves, corals, forests and grasslands
- High poverty, few industries
- Most people fish or keep livestock; some tourism on Lamu island
- Critical ecosystems at risk from new development



LAMU TOMORROW

LAMU PORT AND NEW TRANSPORT AND DEVELOPMENT CORRIDOR (LAPSSET)

natural
capital
PROJECT

- LAPSSET links Southern Sudan, Ethiopia, Kenya
- New port, airport, railroad, roads, resorts, offshore oil drilling
- Clearing of up to 70% of mangroves for development
- Displacement of local residents, informal neighborhoods



CONGRATULATIONS!

natural
capital
PROJECT



Community Chest

YOU HAVE WON
Scenario Developer

IN A
Executive Planning
Committee
COLLECT \$10

© 1936 PARKER BROTHERS

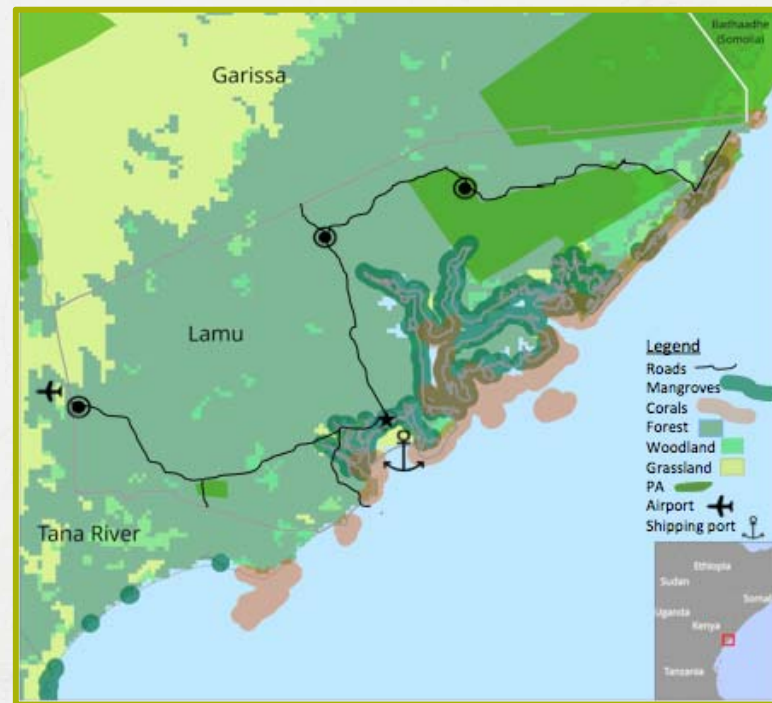


IT'S A TOUGH JOB

SCENARIO DEVELOPER, LAMU COUNTY

natural
capital
PROJECT

LAMU TODAY



YOUR JOB IS TO DESIGN A FUTURE SCENARIO



- Consider the future of Lamu
- Tell the story of what could happen over 10 years
- Draw a map to show how the future plays out in space
- Share this with stakeholders and government planners





DIFFERENT RESULTS?

DIFFERENT GROUPS, DIFFERENT QUESTIONS

Vision
Intervention
Projection
Exploration

Lamu County, Kenya

You may choose to draw the following

- Infrastructure 
- Urban 
- Degradation 
- Railroad 

Scenario story lines

An ecotourism vision is realized w/ a new dynamic economy utilizing the coral reef, mangrove, and terrestrial ecosystems to draw international interest to the area. Cruise ships now arrive daily. Ten new ecolodges are constructed. Three new handicraft factories. New footpaths are constructed. A new airport facility. Population grows by 20% ^{in urban centers} because of the new economy. Three new protected areas established.

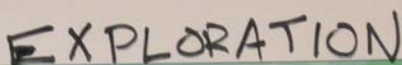


You may choose to draw the following

Infrastructure

Scenario story lines

full build out of
oil rigs & platforms
as price rises &
coincident development
occurs for LAPSET
Conflict in Somalia
continues & flows over
the border. Al Shabab
attacks oil platforms
in 5 years & causes
explosions & oil
spill near Lamu
port.



DIFFERENT RESULTS?

DIFFERENT GROUPS, DIFFERENT QUESTIONS

- **Vision** -What would be the best possible vision for sustainable development of LAPSSET and Lamu?
- **Intervention** - What will Lamu County look like if LAPSSET emphasizes oil exploration, ecotourism in Lamu Town, and a railway (instead of a road) in the development corridor?
- **Exploration** - What possible, unexpected changes might occur in Lamu County as a result of LAPSSET and other drivers of change (e.g. climate change, global recession)?
- **Projection** - What is Lamu likely to look like with projected development and demographic change? How will land uses and habitats change in Lamu under planned development and expected changes?

FUTURE SHOCK! INSTRUCTIONS

1. Break into groups of 5.
2. Read your instructions sheets.
3. Design your scenario in 25 minutes.
4. Assign a 'reporter.'
5. Share your scenario with 'stakeholders' in 2 minutes.

